

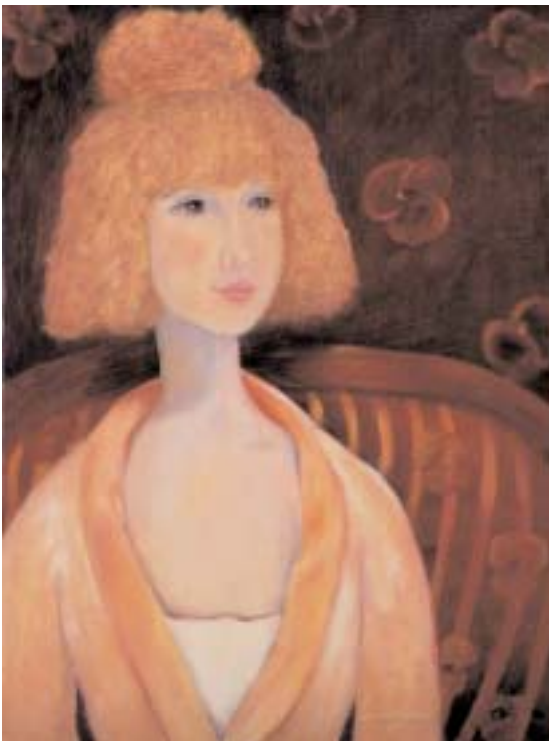


TULSA PERFORMING ARTS CENTER

110 EAST SECOND STREET • TULSA, OK 74103  
tulsapac.com / MyTicketOffice.com

For Immediate Release: June 27, 2007  
Contact: PAC Marketing Director Nancy Hermann  
(918) 596-2368; nhermann@cityoftulsa.org  
PAC Marketing Associate Nancy Bizjack  
(918) 596-2366; nbizjack@cityoftulsa.org  
Artist Jeannie Graham: www.jeanniegraham.com

## 'The Feminine Aura' Paintings by Jeannie Graham



*Sitting Pretty*  
24"x18" Oil on canvas

*The Feminine Aura*, an exhibition of paintings by local artist Jeannie Graham, will be on display at the Tulsa Performing Arts Center Gallery July 2-26. The works are for sale and range in price from \$200 to \$1200.

"The external beauty of women is pictured everywhere," Graham says, "but there are few glimpses of their inner search, which is sometimes soulful and oftentimes humorous." In this collection, Graham aims to give the viewer a glance at the unexpressed and ordinarily unavailable.

Her paintings explore the beauty, tensions and fragility of young women's efforts to define themselves as individuals in a complex society. They reflect a personal expression of concern and delight as these young people sort out the contradictory accumulation of words, expectations and roles that shape their lives from the inside out — thus accomplishing the transition from girlhood to womanhood.

Built around a collection of photographs taken by the artist or painted from life in her studio, these images are not meant to reflect the exact likeness of the subject, but to be a reflection of her attitude and aura.

Graham, a native Tulsan, majored in fine arts at Northeastern State University, graduating magna cum laude in 2005. She is a member of the Tulsa Artist Guild, Tulsa Artist Coalition and Oklahoma Visual Artist Coalition. She owns and operates Studio 1628 (a working artist's studio) and is part-owner of Color Connection Gallery in Utica Square. Her work has been purchased by collectors in Chicago, Atlanta, Denver, Seattle and Palm Springs, as well as in Tulsa. Her paintings can be seen in Tulsa at Color Connection Gallery and at her studio by appointment.

*The Tulsa PAC Gallery, located at 3rd and Cincinnati, is open to the public Monday-Friday from 10 a.m. to 5:30 p.m. and during Chapman Music Hall events. Admission is free.*